

Safety Valve ZB-8

APPLICATION

The ZB-8 safety valves are designed for protection against too high water pressure on electrical water heaters.

CONSTRUCTION

The valve body and all other metallic parts are made of brass. The sealing gaskets are of rubber adequate to its working conditions. All springs are of stainless steel. These valves can release three primary functions:

- A. The safety valve „A” opens the passage „1” for the outflow of water when the pressure in the tank increase over its permissible limit.
- B. The check valve „B” for filling the heater with water. It also prevents the outflow of water from the tank back into the supply line in case of pressure failure.
- C. The return valve „C” opens the outflow of water from the tank into the supply line in case of an excessive pressure rise in the tank exceeding supply line pressure. It makes possible to decrease the pressure in the tank without uptake of hot water from it.

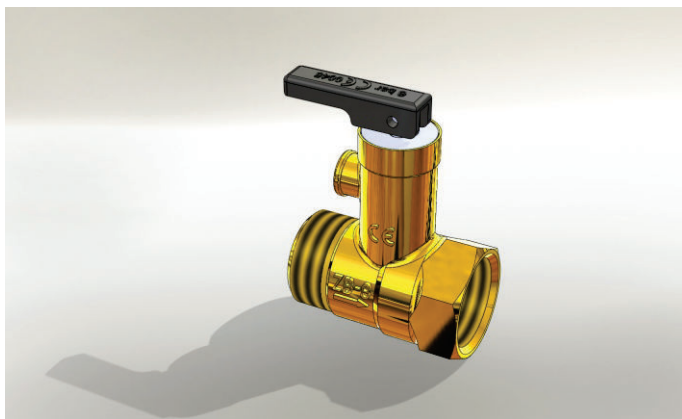
MAINTENANCE:

The proper operating of the safety valve should be verified periodically (at least once a month) by turning the lever “2” up to its up position - water must flow through the outlet “1” and then turning the lever to its down position (like on the drawing) - stop of flow.

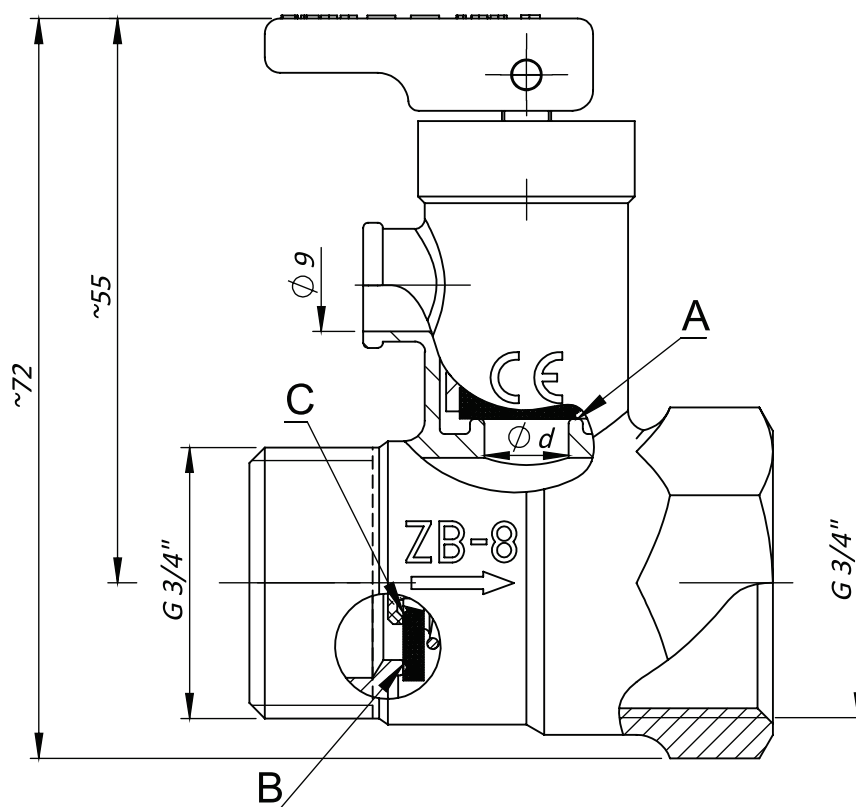
MOUNTING:

The valve shall be installed in the water supply line of the heater. The direction of flow should be in accordance with the arrow marked on the valve body. The water supply line should be stable to 90° C temperature at least 5 m. before heater because hot water may flow back through the check valve. The overflow outlet „1” should be directed downward. It is possible to connect the flexible pipe to overflow outlet for discharge of flowing water to funnel. Inside diameter of pipe should be 11 mm, maximum length - 1 m. The pipe must be stable to 80°C temperature. Max. Length of engagement of pipe into the valve is 9 mm. It is recommended to use the PTFE (teflon) band for sealing. The supply line water pressure cannot exceed the nominal pressure to avoid the continuous overflow from the heater.

Heating



ZB-8 with LEVER



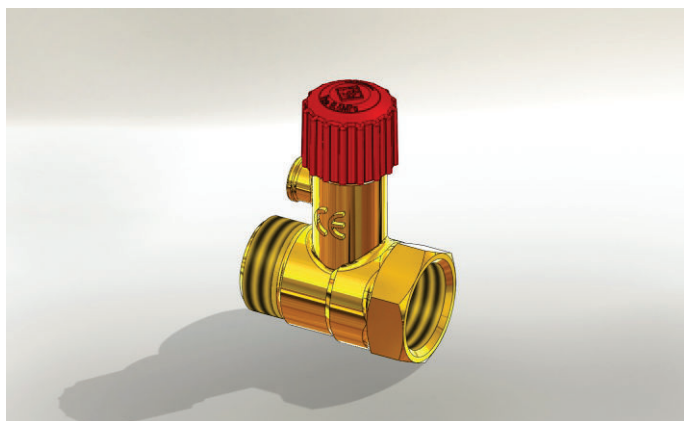
There is a possibility to order out of the box products, customized to the specific customer needs.

Please remember to indicate your preferences regarding packing, before making an order.

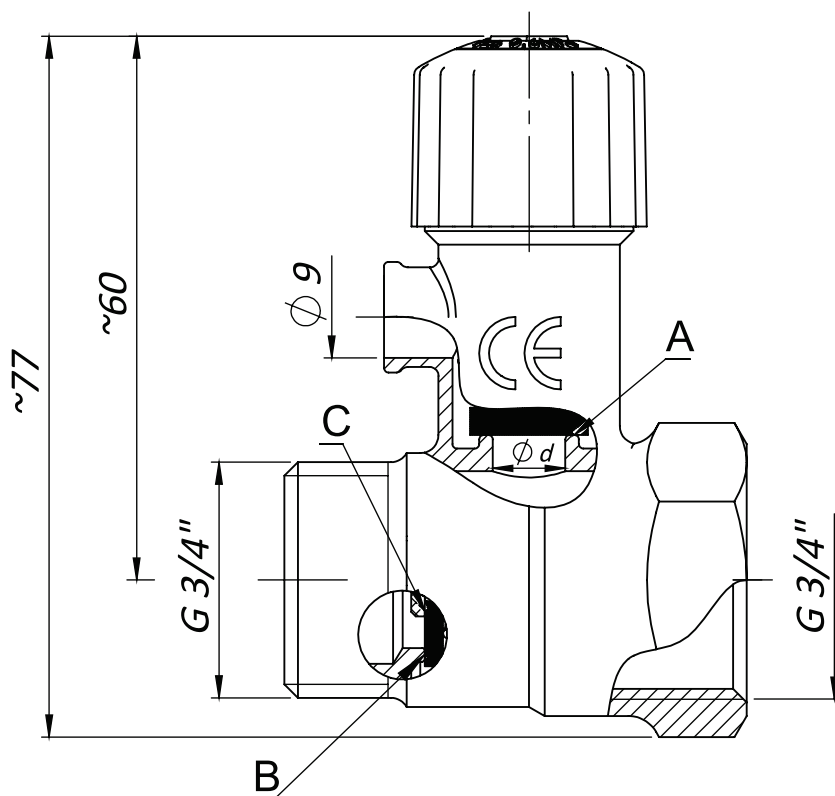
* Pressure of the installation being protected by safety valve.

BODY /surface/	-FACH code	Pressure signed on the valve [bar]*	Pressure for opening safety valve [MPa]	Capacity / mass flow / Qm [kg/h]	Opening valve [MPa]	Return valve [MPa]	T max. [°C]	socket d [mm]	Medium	Lever
Brass	0377-0106	6	0,67±3%	>50	max. 0,05	0,09±0,04	110	n8	water	red
Brass/Ni	0377-1106	6	0,67±3%	>50	max. 0,05	0,09±0,04	110	n8	water	red

Heating



ZB-8 with KNOB



There is a possibility to order out of the box products, customized to the specific customer needs.

Please remember to indicate your preferences regarding packing, before making an order.

* Pressure of the installation being protected by safety valve.

BODY /surface/	-FACH code	Pressure signed on the valve [bar]*	Pressure for opening safety valve [MPa]	Opening valve [MPa]	Return valve [MPa]	IN	OUT	T max. [°C]	socket d [mm]	Construction of the valve B+C	Medium
			A	B	C						
Brass	0377-0105	6	0,67±3%	max. 0,05	0,09±0,04	G 3/4"	G 3/4"	110	n8	with springs	water
	0377-0135	6	0,67±3%	max. 0,05	-	G 3/4"	G 3/4"	110	n8	with rubber	
Brass/Ni	0377-1105	6	0,67±3%	max. 0,05	0,09±0,04	G 3/4"	G 3/4"	110	n8	with springs	
	0377-1135	6	0,67±3%	max. 0,05	-	G 3/4"	G 3/4"	110	n8	with rubber	