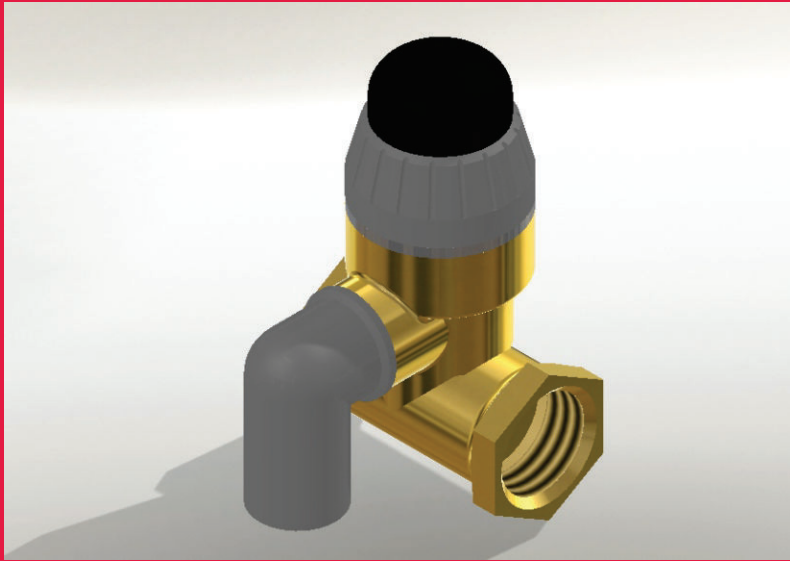


Safety Valve ZB-12



CONSTRUCTION:

The main parts of the valve are the safety valve and check valve.

Safety valve opens the flow to the outlet "1" when the pressure in heater, caused by expansion of heater water, increases over its permissible limit. Check valve protects against water back flow to the supply network. The rubber diaphragm separates safety valve spring and opening device from flowing water. The knob is for periodical test (at least once a month) of safety valve proper operating by turning left (counter clockwise); the water should flow.

Materials: valve body and inner metal parts: brass knob (two parts) - glass fibre reinforced PA diaphragm and gasket - rubber resistant to hot water up to 85°C and ageing proof check valve spring - stainless steel safety valve spring - zinc coated steel

MOUNTING:

The safety valve should be mounted on cold water supply line of the heater. It is not allowed to install filters or any devices between safety valve and heater. The flow direction should be in accordance with the arrow marked on valve body. Maximum length of a pipe engagement into the valve is 9mm. The outlet hole position should be between downward and horizontal, cannot be upward. Plastic elbow should be screwed into outlet hole with outlet downwards. The overflow outlet can be connected with funnel using the pipe having the cross section at least equal to overflow outlet one. The outlet pipe' cannot be longer than 1,2m, should be placed with slope and max. two bends . The outflow of water must be free and visible. The servicing personnel should be protected against injury. The cross section of funnel pipe must be at least twice as the overflow outlet one. The safety valve must be easy accessible after mounting. The valve and outflow pipe must be protected against freeze-up

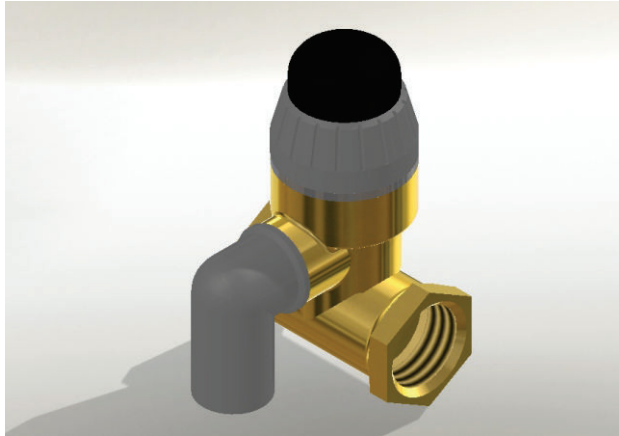
APPLICATION:

The ZB-12 safety valves are designed for protection against to high water pressure in storage type electric water heaters of capacity up to 200 l.

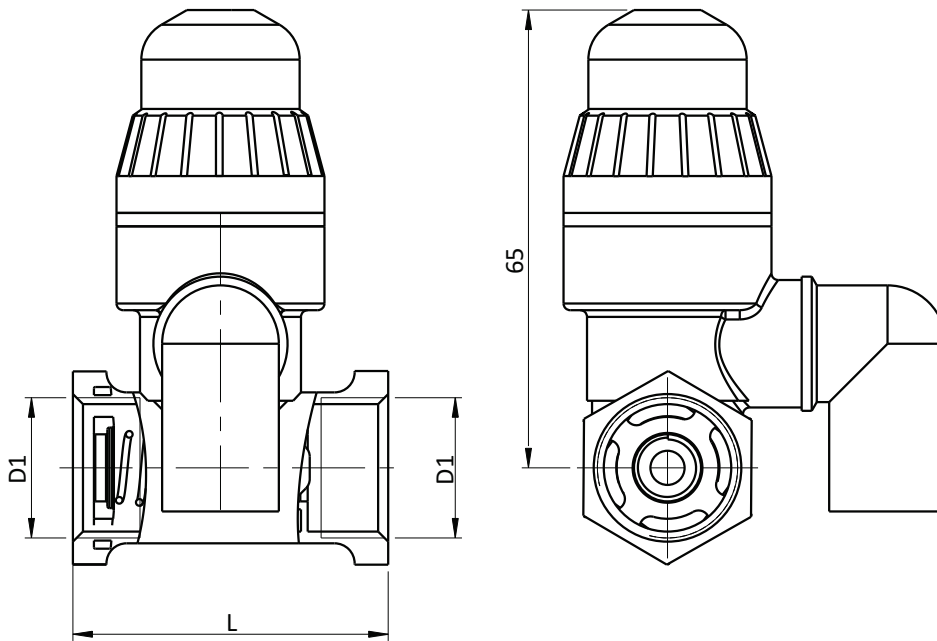
MAINTENANCE:

The proper operation of valve should be verified before every start-up and at least once a month turning the knob to position when water is flowing through the overflow outlet and following turning the knob to it down position with pressing to the valve body. If water still flow the valve should be swilled by repeated opening and closing. If water does not flow after opening the valve call the authorized service man.

Heating



ZB-12



There is a possibility to order out of the box products, customized to the specific customer needs.

Please remember to indicate your preferences regarding packing, before making an order.

* Pressure of the installation being protected by safety valve.

BODY /surface/	-FACH code	Pressure signed on the valve [bar]*	Pressure for opening safety valve [MPa]	Capacity / mass flow /	Certified reduced factor outflow	L	D1	D1	T max. [°C]	socket d [mm]	Medium
Mosiądz	0374-1131	6	0,64`3%	>110	0,018	~53	1/2"	1/2"	130	12	WATER
	0379-1131	6	0,64`3%				3/4"	3/4"	130	12	
Mosiądz/Ni	0374-0131	6	0,64`3%	>110	0,018	~53	1/2"	1/2"	130	12	WATER
	0379-0131	6	0,64`3%				3/4"	3/4"	130	12	

FABRYKA AUTOMATYKI „FACH” Spółka Akcyjna ul. Stawowa 50, 43-400 Cieszyn

Phone.: +48 (0...33) 852 25 80 ÷ 84, fax: +48 (0...33) 852 10 85 e-mail: fach@fach.pl

Sales Department

Phone: +48 (0...33) 851 67 78 – 79, fax: +48 (0...33) 851 67 88 e-mail: sprzedaz@fach.pl

Phone export: tel./fax +48 (0...33) 851 67 77 e-mail: marketing@fach.pl

Purchasing Department

Phone: +48 (0...33) 851 67 80, fax: +48 (0...33) 852 10 85 e-mail: zaopatrzenie@fach.pl

