

## Automatic venting with the shut valve

### Intended use

Vents are used both in closed and open central heating systems. Vent is offered complete with a foot valve, which allows to remove the vent from the system without the need to release the medium.

### Design

The housing is made of brazen bar. Cover, lever, float, screw cap and yoke are made of polymer resistant to hot water at the temperature up to 110 C. Gaskets of silicone are resistant to hot water at the temperature up to 110 C, springs are made of stainless steel.

### Fitting

Fit the element only in vertical position in highest points of the system. In order to open the automatic venting valve it is necessary to unscrew (1-2 turns) the cap in upper part of the valve (the cap is protected against losing).

### Specifications

Medium: water

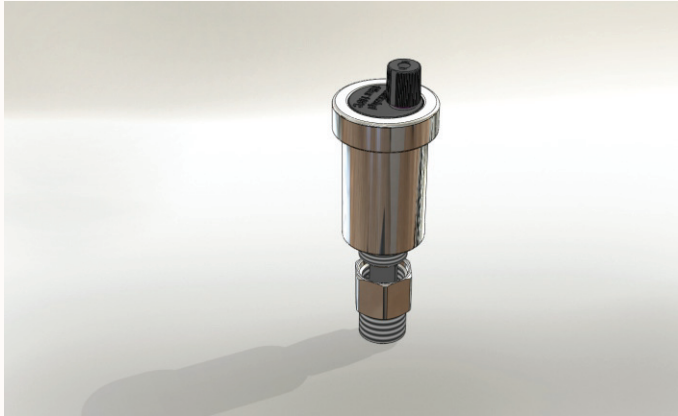
Medium temperature: max. 110 °C

Vent connection: G3/8"

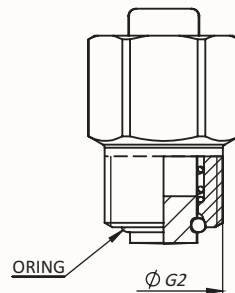
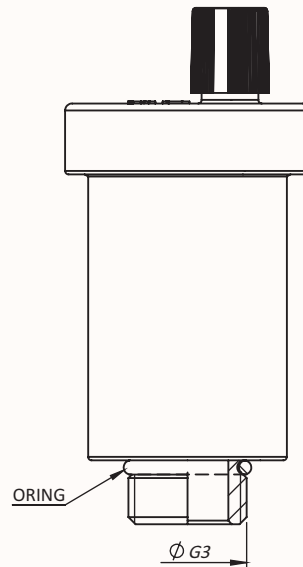
Foot valve connection: external G1/2"

Foot valve connection: internal G3/8"

# Heating



## OZS



There is a possibility to order out of the box products, customized to the specific customer needs.

Please remember to indicate your preferences regarding packing, before making an order.

| BODY<br>/surface/ | -FACH code | Terminal valve<br>G2 | Seal valve | Terminal vent<br>G3 | Seal the vent |
|-------------------|------------|----------------------|------------|---------------------|---------------|
| Brass             | 0500-0011  | G3/8"                | ORING      | G3/8"               | ORING         |
|                   | 0500-0021  | G1/2"                |            | G3/8"               |               |