

# MANUAL SHUT-OFF VALVES

## ZO type

Code No: see table

02



### APPLICATION

The ZO shut-off valves are designed for manual closing and opening the flow of fluorinated refrigerants and other non-corrosive to copper alloys media. They have diaphragm inner sealing so they are not recommended for use where is high operating frequency. The flowing medium must be free of mechanical impurities.

### CONSTRUCTION

The valve body is of forged brass. The valve wheel is of plastic with metallic insert. The flowing medium is separated from the spindle and cover with stainless steel diaphragms for the best external leak tightness. In event of crack of the diaphragms it is possible to tight the fully open valve turning spindle maximally counter-clockwise. When the valve is fully closed the outflow of medium is not possible. The valve head sealing is of plastic; the tightening moment is 4 Nm for Ø 12 and 7 Nm for bigger port sizes.

### MOUNTING

These valves can be mounted in any position using the added base. They have flare connections acc. to DIN 8912. The flow direction should be in accordance with the arrow marked on the body. The access to the valve wheel should be convenient.

**Fabryka Automatyki „FACH” Spółka Akcyjna** ul. Stawowa 50, 43-400 Cieszyn  
tel.: +48 (0...33) 852 25 80 ÷ 84, fax: +48 (0...33) 852 10 85 e-mail: fach@fach.pl

**Sales Department:**  
Phone: +48 33 851 67 77-78 fax: +48 33 851 67 88 e-mail: marketing@fach.pl

**Purchasing Department:**  
phone: +48 33 851 67 80 fax: +48 33 852 10 85 e-mail: zaopatrzenie@fach.pl



1/2

# MANUAL SHUT-OFF VALVES

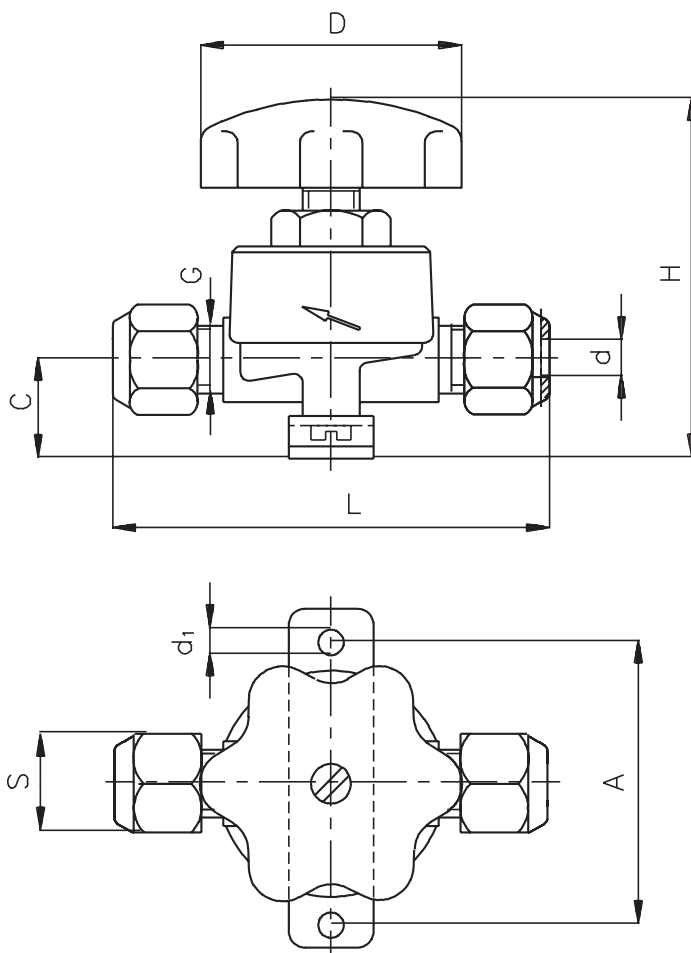
## Z0 type

Code No: see table

### TECHNICAL DATA

Nominal pressure (on closed valve only):  $p_n = 2,5 \text{ MPa}$   
 Working pressure (on opened valve):  $p_r = 2,0 \text{ MPa}$   
 Medium temperature:  $-25 \text{ }^\circ\text{C}$  to  $+55 \text{ }^\circ\text{C}$

Type	Code No	A	C	D	d	d1	G	H	L	S	Weight kg
		mm						mm			
ZO-6	1555-0011	50	17,5	Ø 46	Ø 6,2	Ø 4,2	M12x1,5	68	77	17	0,3
ZO-8	1555-0012	50	19	Ø 46	Ø 8,2	Ø 4,2	M14x1,5	72	85	19	0,35
ZO-10	1555-0013	50	19	Ø 46	Ø 10,2	Ø 4,2	M16x1,5	72	85	22	0,4
ZO-12	1555-0014	56	22	Ø 62	Ø 12,2	Ø 5,3	M18x1,5	82	97	24	0,55



Fabryka Automatyki „FACH” Spółka Akcyjna ul. Stawowa 50, 43-400 Cieszyn  
 tel.: +48 (0...33) 852 25 80 ÷ 84, fax: +48 (0...33) 852 10 85 e-mail: fach@fach.pl

Sales Department:  
 Phone: +48 33 851 67 77-78 fax: +48 33 851 67 88 e-mail: marketing@fach.pl

Purchasing Department:  
 phone: +48 33 851 67 80 fax: +48 33 852 10 85 e-mail: zaopatrzenie@fach.pl