



APPLICATION

The ZKU rotalock valves are designed to cutting off the flow of agents in refrigerating units. They are designed for refrigerating medium R12, R22, R502, R134A, R404A, R407C, R600A and any other agents inactive according to steel and copper as well.

CONSTRUCTION

In valves:

- Rotalock" type- the body and flare are made off low carbon steel and the needle is made off steel.
- Flat leg" type- the body and flare are made off low carbon steel, connection tubes to brazing are made off copper tubes and the needle is made off steel.

The valve's surface is protected from corrosion by tin plating.

There are different kinds of flare in the valves:

- inlet flare,
- outlet flare,
- auxiliary flare used to connection to the installations.
 - With the hole \varnothing 1,5 mm to connect the pressure control.
 - With the hole \varnothing 4 mm to connect the manometer.

The valves set in the table are in production process. According to the customer's wish we are able to produce other variation of the valve.

MOUNTING

Mounting of the valve depends on the type of valve. Valve can be mounted either by screwing down the pipe joint, brazing copper tubes to valve's topper tube or by screwing down the "rotalock" nut.

FLOW ADJUSTMENT

Flow adjustment is regulated by twisting the square ended needle using tubular spanner. The end of the needle is available after twisting protective cap.

1. In the needle position screwed out maximum clockwise (+ CCW):
 - the passage between the inlet and outlet is closed,
 - the passage from the terminal with the nut "rotalock" or (in "flat leg" valves) for auxiliary flare is open.
2. In the needle middle position:
 - the passage between the inlet and outlet is open,
 - the passage to auxiliary flare is open.
3. In the needle position screwed out maximum to the gland's side (- CCW):
 - the passage between the inlet and outlet is open,
 - the passage to auxiliary flare with the hole \varnothing 1.15 mm is open,
 - the passage to auxiliary flare with the hole \varnothing 4 mm is closed.

TECHNICAL DATA:

Nominal pressure	2,2 MPa
Weight:	
"Rotalock" valve squared 20	about 0,3 kg,
"Rotalock" valve squared 28	about 0,6 kg,
"Flat leg" valve	about 0,3 kg,
Working temperature range	- 40°C to 100°C.

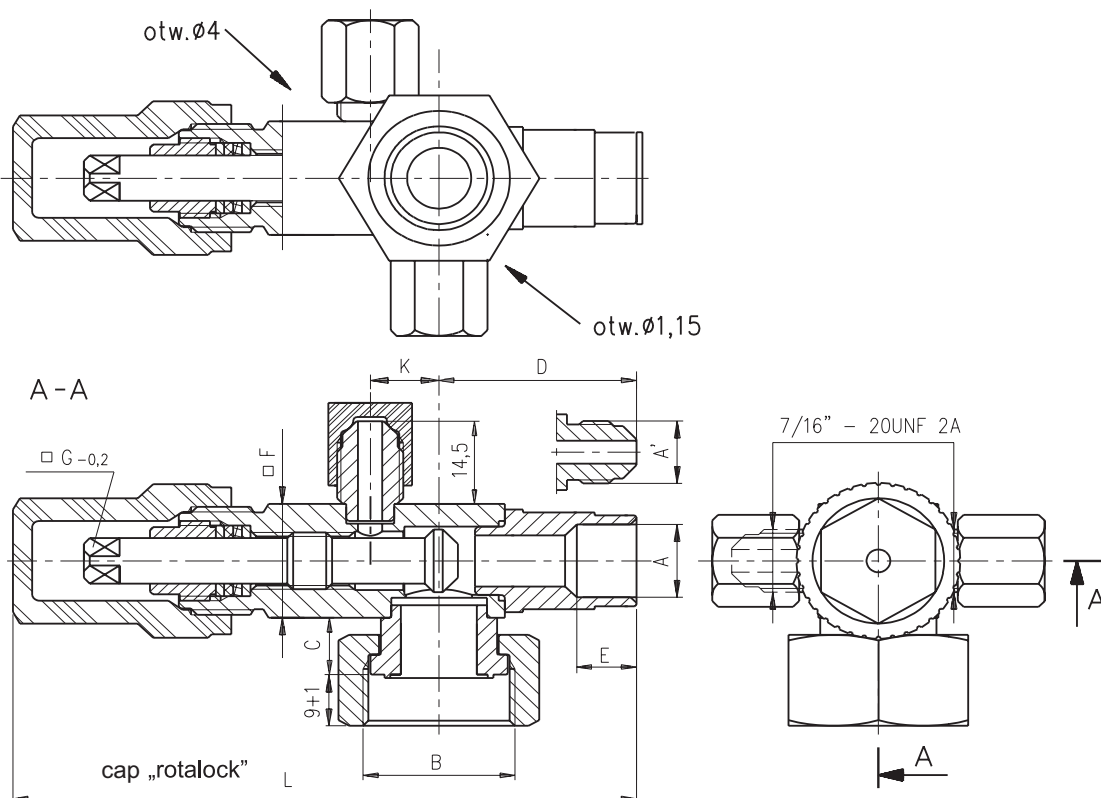
ROTALOCK VALVES

ZKU type

Code No: see table

ZKU „rotalock” valves (front flare dimension in [mm]):

catalogue number	Terminal „rotalock” thread B	Flare			Measurements [mm]						
		brazing \varnothing A [mm]	turning \varnothing A [mm]	tube	C	D \pm 3	E	F	G -0,2	K	L \pm 1
1566-0901	1"-14UNS	6,45 +0,2			12	29	10	20	6,35	11,5	99,5
1566-0908	1"-14UNS	9,65 +0,2			12	29	10	20	6,35	11,5	99,5
1566-0904	1"-14UNS	12,85 +0,2			12	31	10	20	6,35	11,5	99,5
1566-0906	1 1/4"-12UNF	12,85 +0,2			11	31	10	20	6,35	11,5	101,5
1566-0905	1"-14UNS	16,05 +0,2			12	29	10	20	6,35	11,5	99,5
1566-0913	1 1/4"-12UNF	16,05 +0,2			11	31	10	20	6,35	11,5	99,5
1566-0909	1"-14UNS		7/16"-20UNF	1/4"	12	29	10	20	6,35	11,5	98,5
1566-0910	1"-14UNS		5/8"-18UNF	3/8"	12	32	10	20	6,35	11,5	100,5
1566-0911	1"-14UNS		3/4"-16UNF	1/2"	12	34	10	20	6,35	11,5	102,5
1566-0912	1"-14UNS		7/8"-14UNF	5/8"	12	40	10	20	6,35	11,5	108,5
1566-0933	1 1/4"-12UNF	19,25 +0,2			11	41	15	28	7,95	15	128
1566-0921	1 1/4"-12UNF	22,4 +0,2			11	41	15	28	7,95	15	128
1566-0922	1 1/4"-12UNF	28,8 +0,2			11	50	20	28	7,95	15	137



Fabryka Automatyki „FACH” Spółka Akcyjna ul. Stawowa 50, 43-400 Cieszyn
tel.: +48 (0...33) 852 25 80 ÷ 84, fax: +48 (0...33) 852 10 85 e-mail: fach@fach.pl

Sales Department:
Phone: +48 33 851 67 77-78 fax: +48 33 851 67 88 e-mail: marketing@fach.pl

Purchasing Department:
phone: +48 33 851 67 80 fax: +48 33 852 10 85 e-mail: zaopatrzenie@fach.pl

Code No: see table

ZKU „rotalock” valves (front flare dimension in inches):

catalogue number	Terminal „rotalock” thread B	flare				Measurements [mm]						
		brazing Ø A		turning Ø A' [mm]	tube	C	D±3	E	F	G ^{-0,2}	K	L±1
		[mm]	[cal]									
1566-0901	1"-14UNS		1/4"			12	29	10	20	6,35	11,5	99,5
1566-0908	1"-14UNS		3/8"			12	29	10	20	6,35	11,5	99,5
1566-0904	1"-14UNS		1/2"			12	31	10	20	6,35	11,5	99,5
1566-0906	1 1/4"-12UNF		1/2"			11	31	10	20	6,35	11,5	101,5
1566-0905	1"-14UNS		5/8"			12	29	10	20	6,35	11,5	99,5
1566-0913	1 1/4"-12UNF		5/8"			11	31	10	20	6,35	11,5	99,5
1566-0909	1"-14UNS			7/16"-20UNF	1/4"	12	29	10	20	6,35	11,5	98,5
1566-0910	1"-14UNS			5/8"-18UNF	3/8"	12	32	10	20	6,35	11,5	100,5
1566-0911	1"-14UNS			3/4"-16UNF	1/2"	12	34	10	20	6,35	11,5	102,5
1566-0912	1"-14UNS			7/8"-14UNF	5/8"	12	40	10	20	6,35	11,5	108,5
1566-0933	1 1/4"-12UNF		3/4"			11	41	15	28	7,95	15	128
1566-0921	1 1/4"-12UNF		7/8"			11	41	15	28	7,95	15	128
1566-0922	1 1/4"-12UNF		1 1/8"			11	50	20	28	7,95	15	137

Fabryka Automatyki „FACH” Spółka Akcyjna ul. Stawowa 50, 43-400 Cieszyn
tel.: +48 (0...33) 852 25 80 ÷ 84, fax: +48 (0...33) 852 10 85 e-mail: fach@fach.pl

Sales Department:
Phone: +48 33 851 67 77-78 fax: +48 33 851 67 88 e-mail: marketing@fach.pl

Purchasing Department:
phone: +48 33 851 67 80 fax: +48 33 852 10 85 e-mail: zaopatrzenie@fach.pl

