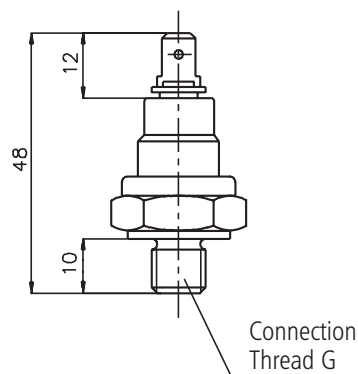


OIL PRESSURE SENSORS

CS-1 type

Code No: see table



APPLICATION

The oil pressure sensors CS-1 type are used for signalling of pressure drop in the lubrication system of tractor and motor-car engines.

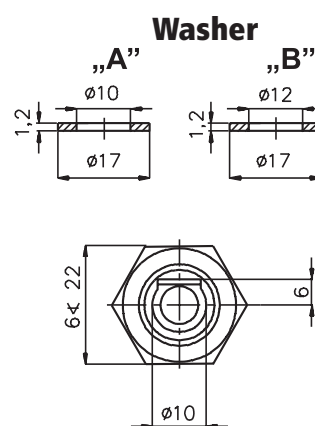
CONSTRUCTION

All materials used for production of the sensor are corrosion-resistant or protected against corrosion. The electrical terminals are: one 6,3 mm tab and the metallic body. These sensors cut-in the circuit on pressure drop.

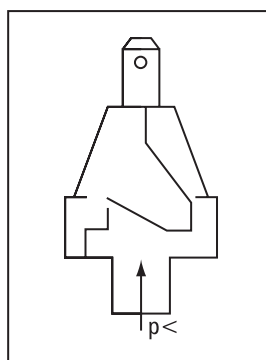
Weight: 0,3 kg

MOUNTING

These sensors are mounted by screwing in into the hole in engine body. The connection threads and washers are specified in the table.



CIRCUIT DIAGRAM



TECHNICAL and ELECTRICAL DATA

Code No	Thread	Cut-in Pressure Range	Max. Permissible Pressure	Washer	Application
	G	MPa	MPa		
0141-0001	M10	0,05 do 0,12	3	A	spare part for URSUS C-330, C-360 farm tractors
0141-0003	1/8" - 27*)	0,06 ,014	2	-	spare part for Masey - Ferguson farm tractors

*) 1/8"-27 tight thread NPTF acc. to SAE J476 Napięcie znamionowe 12 V

Rated voltage: 12 V DC

Rated current: 0,5 A lamp

Fabryka Automatyki „FACH” Spółka Akcyjna ul. Stawowa 50, 43-400 Cieszyn
tel.: +48 (0...33) 852 25 80 ÷ 84, fax: +48 (0...33) 852 10 85 e-mail: fach@fach.pl

Sales Department:
Phone: +48 33 851 67 77-78 fax: +48 33 851 67 88 e-mail: marketing@fach.pl

Purchasing Department:
phone: +48 33 851 67 80 fax: +48 33 852 10 85 e-mail: zaopatrzenie@fach.pl

